



TMC2500T

50Hz POWERED BY MITSUBISHI SERIES



TECHNICAL SPECIFICATIONS

DIESEL GENERATING SET 400/230V-50Hz-3Phase

Model	TMC2500T	
Power(ESP)	kVA/kw	2500/2000
Power(PRP)	kVA/kw	2273/1818
Rated Voltage	V	400
Rated Current	A	3609
Rated rotation speed	r/min	1500
Power Factor		0.8
Fuel Consumption	Litre/hour	547 L / h
Fuel Tank Capacity	Litre	
Noise level	dB(A)@ 1m	≤88

WEIGHT AND DIMENSIONS

GEN-Set	Dimension (L*W*H)	Weight
Open Type		
Silent Type		

STANDARDS:

Genset: GB/T2820—2009,ISO8528

Alternator: STAMFORD , S7L1D-J41

Diesel Engine: SME , S16R2-PTAW-C

Standby Power: Continues running at variable load for duration of an emergency. No overload is permitted on these ratings.

Prime Power: Continues running at variable load for unlimited periods with 10% overload available for 1 hour in any 12 hour period.

CONFIGURATION:

Standard: Engine, alternator, cooling system, Base frame (excluding fuel tank), shock absorber, air inlet system, control box (including mains floating charge), plastic fan blades (when the engine and water tank do not bring).

Optional: Base frame (including fuel tank), water jacket heater, fuel water separator, fuel heater, fuel level sensor (only supporting underframe tank), switch box (with switch), power switch, the water level sensor, motor anti condensation heater, automatic fueling system (only supporting base frame including fuel tank), battery frame.

Accessories: Silencer, bellow, exhaust silencing system accessories (with the matching engine), regular battery, starting cord assembly, data of gen-set, random tool (with the matching engine).





ENGINE Specification

Manufacturer: SME	
Model	S16R2-PTAW-C
Engine speed Rated	1500 RPM
Cylinder /Arrangement	16/60°V
Displacement	79.9 L
Bore and Stroke	170 mm×220 mm
Compression ratio	14.1 : 1
Max. stand by power at rated RPM	2176 KW
Frequency regulation , steady state	±0.25 %
Governor : type	Electrical
Aspiration and Cooling	Turbo-charged , After cooler

Exhaust System

Exhaust gas flow	506m ³ /min
Max back pressure	600mm H ₂ O

Fuel System

Fuel consumption100% (of the Prime Power)	547 L / h
Fuel consumption75% (of the Prime Power)	395 L / h
Fuel consumption50% (of the Prime Power)	272 L / h
Fuel consumption25% (of the Prime Power)	151 L / h

Oil system

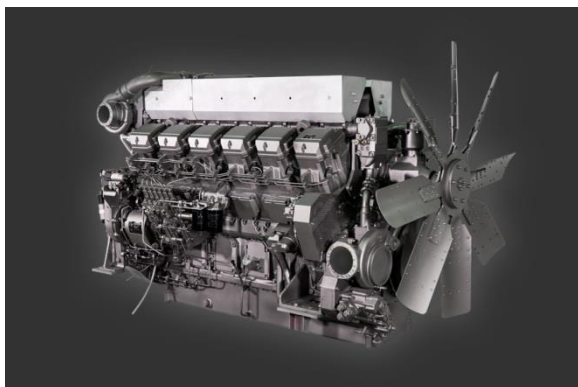
Total oil capacity w/filters	290 L
-------------------------------------	-------

Air intake


Engine air flow	191 m ³ /min
------------------------	-------------------------

Coolant System

Engine capacity	190 L
Max water temperature	98°C
Thermostat	71-85°C
Coolant flow	1650L/min



- SME engines with high-strength design, working durably, stably and reliably.
- Tolerance for impact resistance and output sufficient.
- Low fuel consumption, low vibration and noise, simple and low cost maintenance.

Note: All data sheets are for reference only and  subject to change without prior notice.



ALTERNATOR Specification

Manufacturer: STAMFORD

Type	S7L1D-J41
Number of phase power	3
Factor (Cos Phi)	0.8
Pole	4
Bearing	1
Coupling	Direct
Exciter type	PMG
Insulation : class , temperature rise	H / H
Degree of protection	IP23
AVR model	MX322
Altitude	≤1000m
Winding Pitch	2/3
Winding Leads	6

FEATURES

- Utilising wire-wound* (random-wound) technology
- Environment alternators are the industry benchmark for all generator set configurations.
- Brushless excitation with AVR
- IP21, IP22, IP23, IP44 enclosure protection.
- The ideal solution for marine/offshore, UPS, telecoms, basic and advanced protection, construction and other continuous or standby power applications.

STAMFORD

STANDARDS

-GB755, BS5000 part three, VDE0530, NEMA MG1-22, IEC-34, CSA C22-100 and AS1359
 -All alternators are manufactured in ISO 9001 and ISO 14001 environments.



Note: All data sheets are for reference only and subject to change without prior notice.



Control Panel

Model: SGC 420

SINGLE GENSET CONTROLLERS.

DIMENSIONS

OVERALL

233mm x 173mm x 38.5mm

PANEL CUTOUT

219mm x 158mm



KEY FEATURES

- Auto, manual and remote start/stop modes with night restriction option
- 17 inputs, configurable
- 5 resistive
- 2 analogue I/V
- 1 differential
- 9 digital
- 7 digital outputs, configurable
- Modbus over RS-485
- Manually configurable from the controller front buttons or from a PC using DEIF Smart Connect utility software
- Backlit full graphics LCD with power saving feature for extended battery lifetime
- Supports the battery charging alternator I/O interface
- Supports Auto mode (site battery monitoring, AMF, remote start/stop, auto exercise and cyclic) and manual running modes
- Magnetic Pickup Unit (MPU) interface for engine speed measurement
- Auto exercise mode (2 events) to start and stop the genset for a preconfigured time
- Monitors 1-phase/3-phase voltage, frequency, load current and power factor for generator
- Monitors engine safety parameters like lube oil pressure, engine temperature, fuel level and more
- Monitors telecom site battery backup level and shelter temperature to reduce engine running and fuel consumption at telecom tower sites
- Controls start relay, fuel relay, alarm horn and more as digital outputs
- Event log for 100 events with real time clock (RTC) stamps and engine running hours information
- Counters for engine starts, engine trips, engine running hours, genset and Mains kWh, kVAh, kvarh
- Measures mains kW, kVA
- CANbus for engine communication with support for Stage 5/ Tier 4 Final

KEY FUNCTIONS

- LCD display
- True RMS voltage and current monitoring
- RS-485 base communication
- Monitoring of engine and alternator parameters
- Fully configurable inputs and outputs for a wide range of functions